

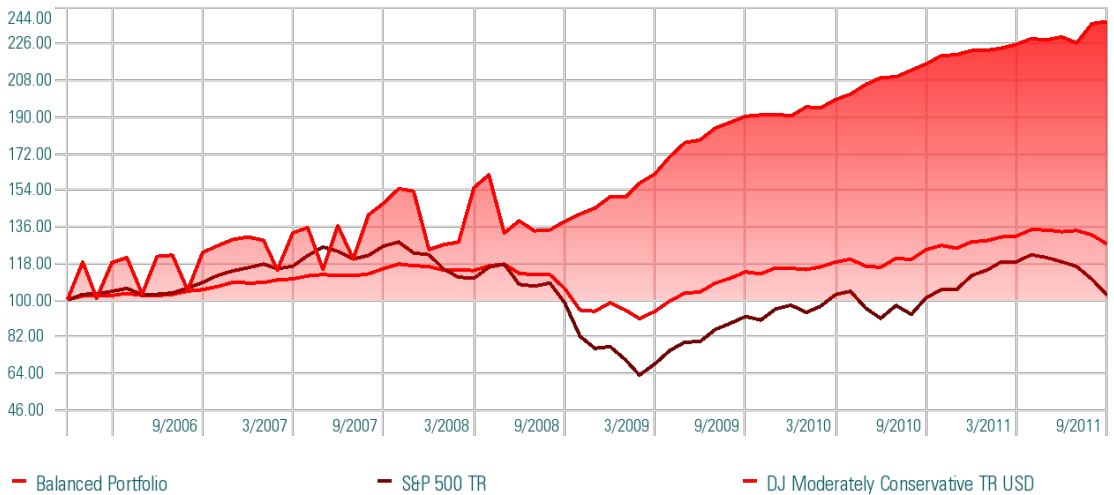
Abaris Asset Management utilizes a proprietary algorithm based management system, Proven over time and deployed to address the market's new reality of high volatility and uncertainty. This is a new paradigm in money management. Abaris' portfolios seek to preserve and grow capital by producing absolute returns with reduced volatility, manageable risk, and minimal drawdown. Our portfolio selection is based on fundamental analysis and focuses on risk tolerance levels. We employ a pro-active approach to investment management, rather than the passive approach of buy and hold.

We believe our investment approach, algorithmic system and customized services are truly "changing the game" in investment management.

Abaris Balanced Portfolio Allocates 50% to Fixed income ETF's 40% to Equities across multiple asset classes and 10% to cash. The system will trade long only utilizing long and short ETF's.

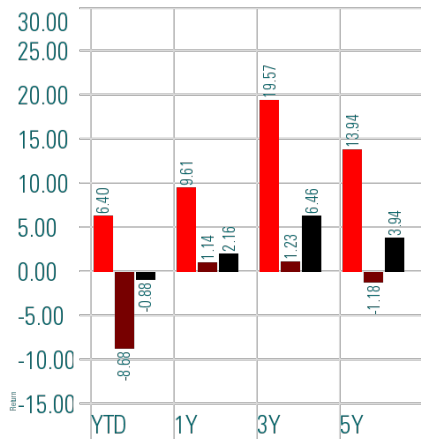
Investment Growth (Cumulative TWR, Gross of Fees)

Time Period: 1/1/2006 to 9/30/2011



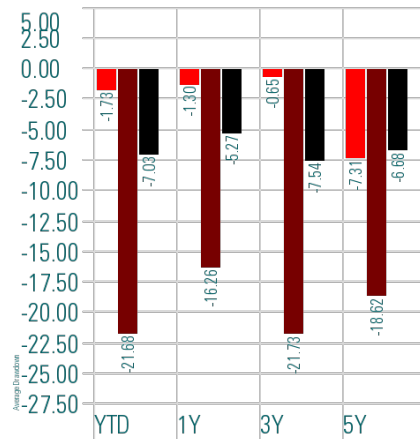
Returns

As of Date: 9/30/2011



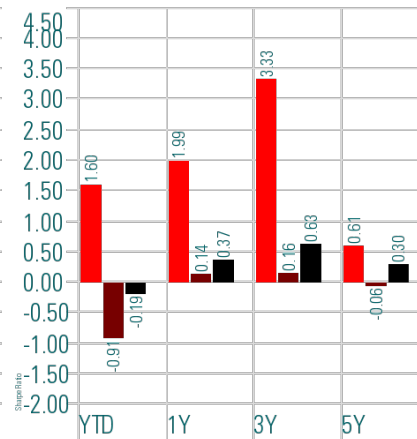
Drawdowns

As of Date: 9/30/2011



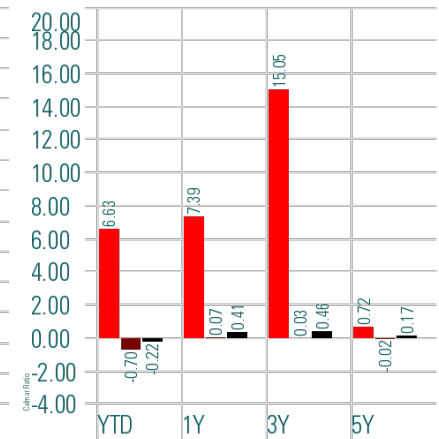
Sharpe Ratio

As of Date: 9/30/2011



Calmar Ratio

As of Date: 9/30/2011



Legend: ■ Balanced Portfolio ■ S&P 500 TR ■ DJ Moderately Conservative TR USD